



The Network of Excellence on Land Governance in Africa

The power of our network in progressing land governance in Africa



Report Outline

PART 1

Introduction

PART 2

Project Component

PART 3

Our Results

PART 4

Next Steps

*Research * Capacity Building * Policy*

Introduction

In 2006, the African Union Commission with African Development Bank and United Nations Economic Commission for Africa established the Land Policy Initiative (LPI) now African Land Policy Centre (ALPC), thereby placing emphasis on the urgency of developing land policies, strengthening land governance in Africa and assisting African Union Member States address priority land concerns.

From the onset, the overall aim of ALPC was to examine land policy issues and challenges in Africa and to develop a framework that would strengthen land rights, enhance productivity, and improve livelihoods. The institution also recognized that land is key to political stability, economic transformation, social cohesion, and environmental sustainability. Extensive research and consultations involving the participation of Regional Economic Communities (RECs) in the five regions of the continent, civil society, organizations, centres of excellence on the continent and beyond, practitioners and researchers in land policy development, government agencies, and development partners led to the creation of two important documents, which are now considered central to the work of ALPC:

- Framework and Guidelines on Land Policy in Africa
- African Union Declaration on Land Issues and Challenges in Africa

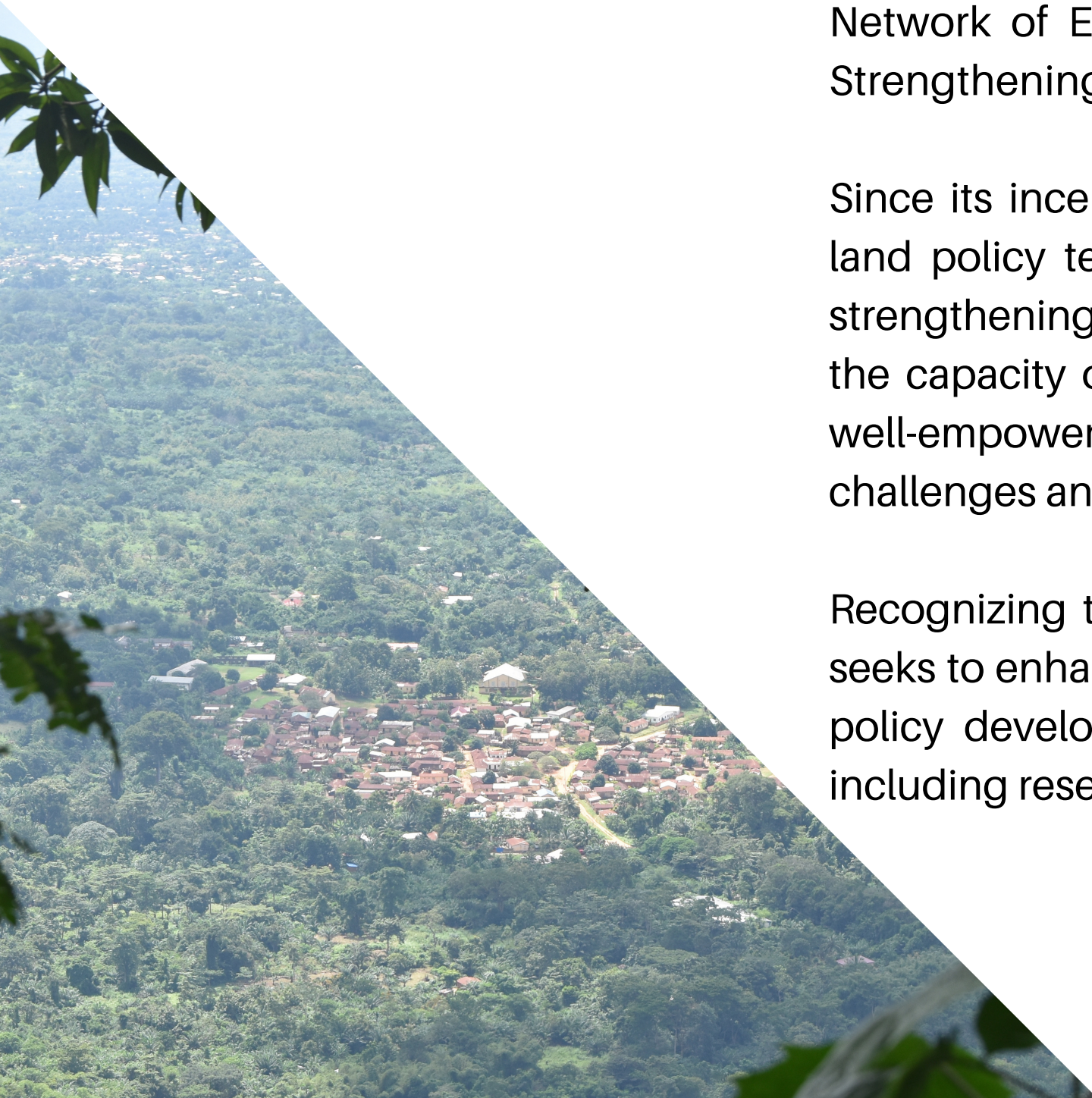
ALPC's aims to facilitate the implementation of the AU Declaration of Land Issues and Challenges in Africa by providing technical support to RECS and AU member states, promoting networking and knowledge transfer, building capacity to support and monitor land policy development and implementation in Africa.

Putting NELGA into Practice

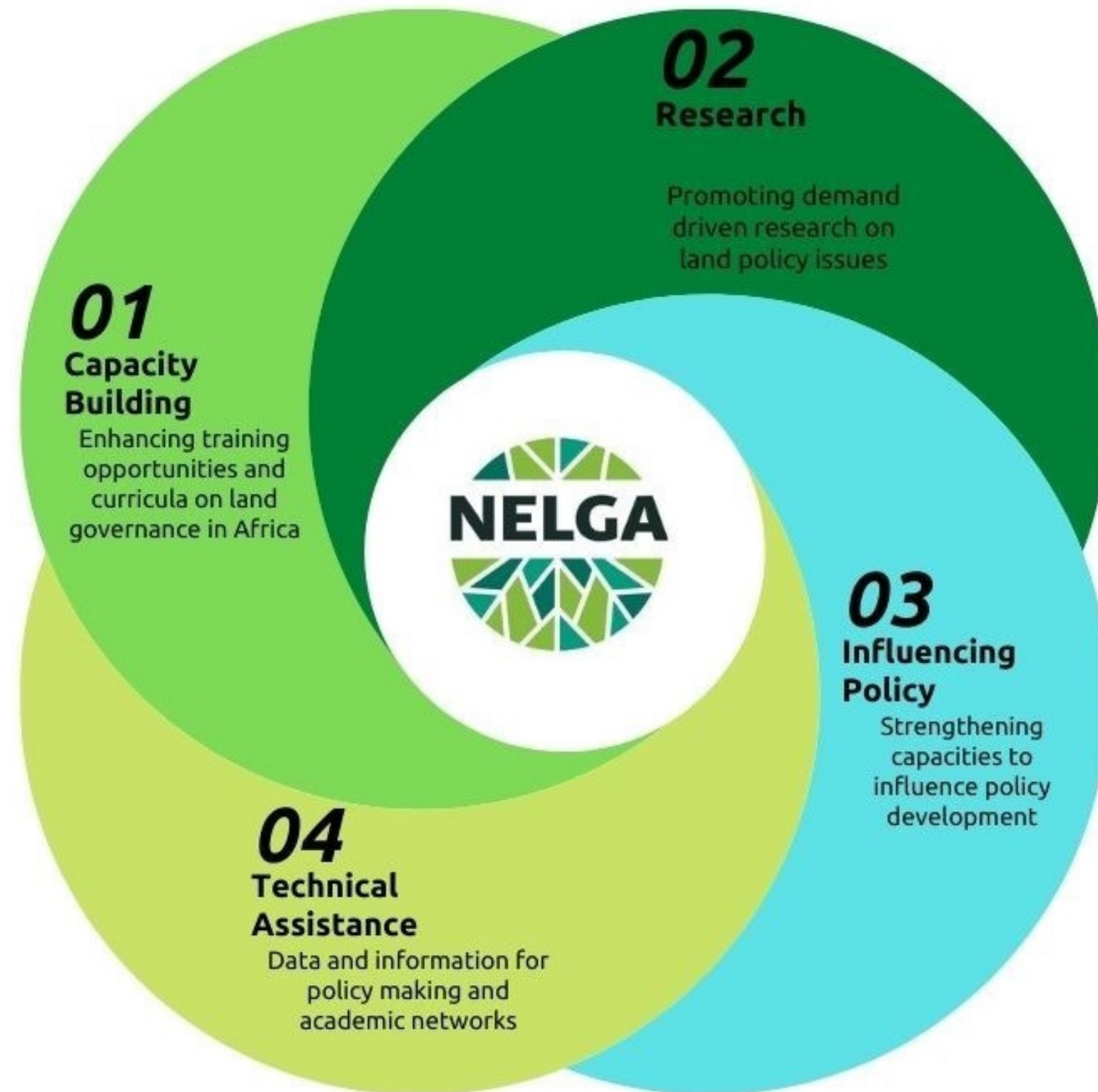
The ALPC is successfully and gradually leading the Member States to some level of political will. One of the means in meeting these objectives was instituting the Network of Excellence on Land Governance in Africa (NELGA) in 2016 to support knowledge sharing, bridge data gaps and technical support to policymakers and land stakeholders. The ALPC partnered with the Government of Germany (BMZ) through the technical assistance of GIZ and the World Bank to establish the Network of Excellence on Land Governance in Africa (NELGA) under the BMZ/GIZ program on Strengthening Capacities for Land Governance in Africa (SLGA).

Since its inception, NELGA has recorded results and instituted systems in bringing about stronger land policy terrain and addressing weak land governance through various capacity building and strengthening interventions, especially for new and experienced land experts. Failing to strengthen the capacity of land governance experts means not meeting the African Union Agenda on land. A well-empowered land governance sector is better equipped to respond to land governance challenges and ensure socio-development deliveries.

Recognizing the inadequacy of academic programs at African institutes of higher learning, NELGA seeks to enhance the involvement of selected African universities and educational institutions in land policy development, implementation and monitoring through various instruments and programs, including research, training, and financing towards bridging capacity-research-policy divides.



Project Component



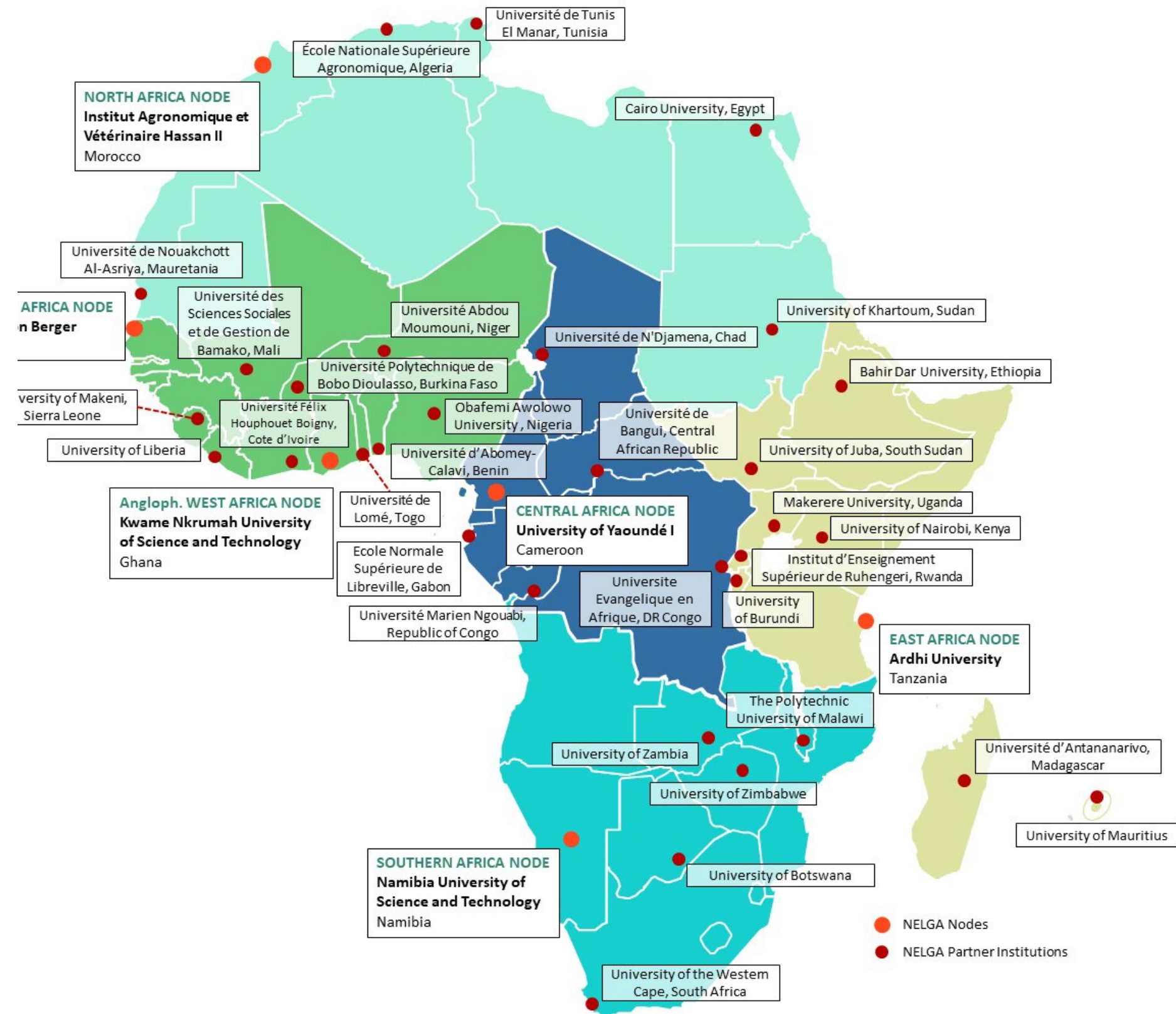
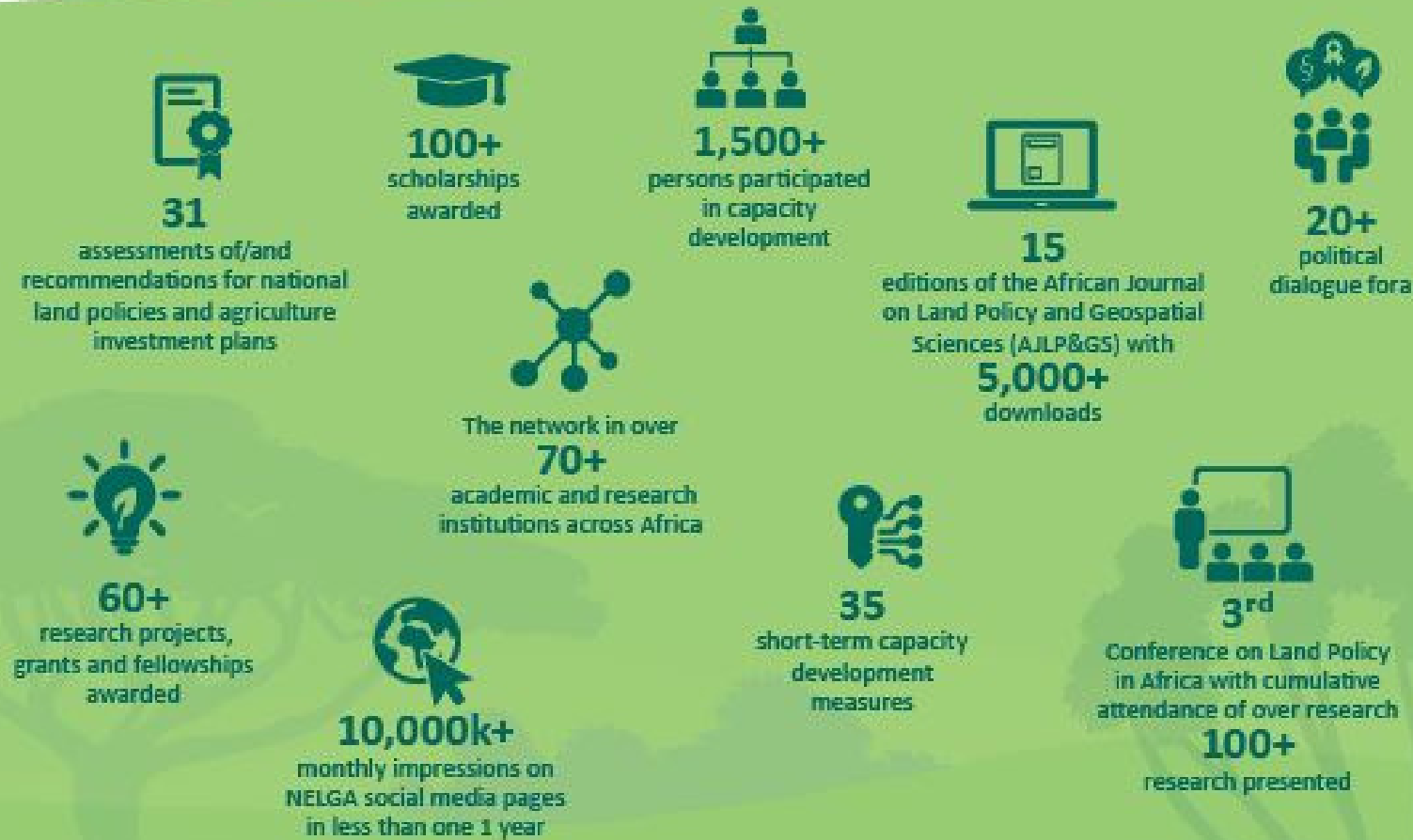
ENHANCE TRAINING OPPORTUNITIES AND CURRICULA ON LAND GOVERNANCE IN AFRICA

PROMOTE DEMAND-DRIVEN RESEARCH ON LAND POLICY ISSUES

CONNECT SCHOLARS AND RESEARCHERS ACROSS AFRICA THROUGH ACADEMIC NETWORKS

CREAT DATA AND INFORMATION FOR MONITORING AND EVALUATION OF LAND POLICY REFORMS

Building Capacity towards the AU Land Agenda



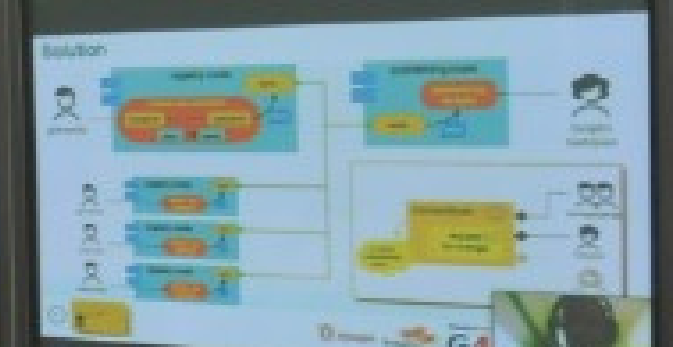
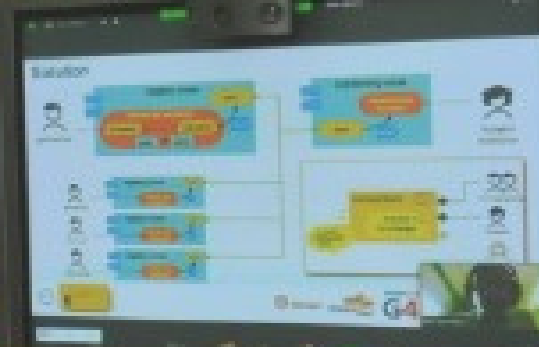
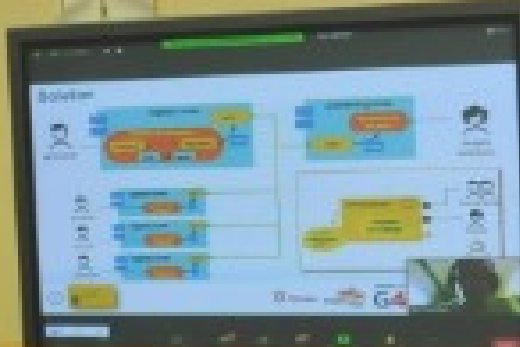
NELGA Coordination

For better coordination of NELGA, the ALPC and its partners created the regional nodes for the different regions in Africa. A lead university has been selected for each AU region to implement and coordinate NELGA activities jointly with other NELGA institutions. A secretariat based at UNECA in Ethiopia provides coordinating and administrative support.





0:22:4



Our Result - Anglophone West Africa



Research

The mission of the KNUST node is to provide top-notch research with focus on land governance and development strategies through a flexible interdisciplinary curriculum and orientation. The nodes high-demand annual research workshops target policy makers and professionals in the land sector at both local and international levels. Through its experience staff the node has trained researchers to effectively communicate research findings to the scientific community in a safe and ethical manner.

Capacity Building

Since 2018 the KNUST node has built capacities of several land professionals and granted 25 scholarships (15 MSc and 10 PhD) on planning, land governance and geomatic engineering courses. In addition, KNUST has organized several land-themed training workshops which leverage technology and e-platforms as a means to address land challenges for stakeholders in the public, private sectors, non-governmental organizations, policy advocacy groups and traditional authorities.

Anglophone West Africa Regional Node

Kwame Nkrumah University
of Science and Technology
(KNUST) in Ghana

Countries:

Ghana, Nigeria, Ghana, Liberia,
Gambia, Sierra Leone

Policy

The node has introduced an international policy dialogue on land governance in West Africa which was set up as a platform for land governance practitioners and policymakers in West Africa to dialogue on key governance challenges confronting the West Africa sub-region.



Our Result – Central Africa



Research

The node carries out extensive research including a national research study to assess the land governance framework in Gabon and was formally presented at the formulation of the National Agricultural Investment Plan, Food Security and Nutrition 2 (PNIASAN 2) in Gabon. It also carried out research on sustainable land use practices which was included in Cameroon's Development Strategies specifically the Rural Sector Development Strategy (SDSR) and the Cameroon National Agricultural Investment Plan (PNIA) 2020-2030.

Central Africa Regional Node

University Yaoundé I in
Cameroon

Countries:

Cameroon, Equatorial Guinea,
Gabon, DR Congo, Chad

Capacity Building

The node has built capacities of over 100 land governance stakeholders on the NELGA network and the land governance terrain in Central Africa. The node has undertaken field missions to over ten higher institutions in different countries building their capacity on land challenges, the African Union land agenda and curricular guidelines, calling for collective support for improving land terrain in the region. They also engage with non-academic land stakeholders leading to the development of a road map to address farmers-headers conflict in Northwest Cameroon and legal dualism with traditional authorities on neo-customary land tenure.

Policy Reform

The node has published and contributed to over 10 policy briefs such as its recommendation on land security rights for Internally Displaced Persons in 2021, and land tenure reforms in Cameroons Revised Rural Sector Development Strategy and the National Agricultural Investment Plan (SDSR/PNIA) in 2020.



Our Result - East Africa



Research

To bridge research and knowledge gaps, the node deployed extensive capacity-building engagement in the regions. As NELGA's pioneer node, Ardhi University was one of the first tertiary institutions to review and adopt the Guidelines for Curricula development in Land Governance while reviewing 3 curricula against the AU guidelines. In support of mainstreaming the curricula, the node peer reviews the MSc degree on Land Administration curriculum, from Technical University Kenya as well as other degree programs.

East Africa Regional Node

Ardhi University in Tanzania

Countries:

Tanzania, Rwanda, Ethiopia, Kenya, Uganda, Burundi, Democratic Republic of Congo, South Sudan

Capacity Building

Since its inception, the node has trained over 302 academics from 11 higher institutions, on land governance in order to mainstream the AU land agenda in the region. For non-academic land stakeholders, the node has strengthened the capacity of over 700 local leaders in nine districts in Tanzania of which 47% were women on gender equality on land laws.

Policy Reform

Since 2016, ARU co-organized with the Eastern Africa Land Administration Network (EALAN) four Annual Conferences with parallel policy and dialogue sessions on land governance



Our Result – Southern Africa



Research

The Node carried out a first of its kind baseline study on the state of land governance in Southern Africa - Botswana, eSwatini, Lesotho, Malawi, Namibia, South Africa, Zambia, and Zimbabwe. The research focused on the institutional framework; the legal framework of land tenure and administration; land dispute resolution; land valuation and taxation; land use planning and control; management of public land; and land information management.

Research recommendations are found in eight country scoping study reports, a synthesis report and a Research and Capacity Development Strategy for Land Governance Innovation .

Southern Africa Regional Node

Namibia University of Science and Technology

Countries:

Botswana, eSwatini, Lesotho, Malawi, Namibia, South Africa, Zambia, Zimbabwe

Capacity Building

Based on the extensive research from the baseline study, the node consistently creates or identify spaces to build the regional capacity on the findings from the scoping study through webinars, masterclasses, conferences and workshops. Also, the node introduced training of trainers Masterclass on Land Governance and Corruption to encourage the multiplier effect of its research findings with higher institutions. Since 2017, 27 opinion pieces have been published in mainstream and online media as an avenue for academics to get research into policy space, build public capacity and generate awareness on land issues in the region.

Policy Reform

In support of mainstreaming land policy issues in the National Agricultural Investment Plan (NAIPs), the node carried out a comprehensive analysis supporting the development of 2nd generation NAIP's in Namibia, Zambia, Zimbabwe, Eswatini and Botswana. The analysis, in policy briefs, were presented to government institutions for adoption.



Capacity Building Center



Our Result – North Africa



Research

To improve the body of contemporary research work for policy reform on land governance in Africa, the node embarked on a scoping study to gather baseline information on land systems in North Africa. The research provided data on capacity gaps and needs in creating an enabling environment for land reforms in Algeria, Tunisia, Mauritania, Morocco, Egypt, and Sudan. The research findings launched in 2021 provide a foundation for curricula development in line with AU curricula guidelines on land governance in Africa and lead to the establishment of the NELGA Research Centre in March 2021.

North Africa Regional Node

Institut Agronomique et Vétérinaire Hassan II in Morocco

Countries:

Algeria, Tunisia, Mauritania
Morocco, Egypt, Sudan

Capacity Building

At IAV Hassan II, the node set up and equipped a Capacity Building Centre (CBC) to build capacity gaps identified in the regional scoping study. An objective of the CBC is to enhance the skills of a new generation of land experts to tackle land governance and systemic challenges. Furthermore, in support of continuous professional development, the node developed e-tools for learning (digital library, assessment systems, learning portals, webinars) for audiences that are not typical land governance experts.

Policy Reform

The node's bi-monthly African Journal in Land Policy and Geospatial Sciences, speaks to African researchers' multi-sectorial achievements and scientific contributions. The journal is shared with policymakers and academics as an essential information source on data for policy reforms. To date, the journal has issued over ten editions since 2018.



Our Result – Francophone West Africa



Research

The node promotes research and strengthens human and institutional capacities on land tenure by establishing a Research Centre. The Centre produces and analyses data to transform land tenure policies in Francophone West Africa, considering sub-regional integration policies and the information from regional missions. The Centre provides a library for research and space for exchange for postgraduate students, researchers, and future policymakers.

Francophone Regional West Africa Node

Université Gaston Berger (UGB) in Senegal

Countries:

Senegal, Mali, Guinea, Burkina Faso, Benin, Ivory Coast, Niger, Togo

Capacity Building

Since its establishment, the node has strengthened the capacities of various actors through exchange and capacity building workshops. They have held several Curriculum review workshops in Senegal, Mali, Guinea, Benin, and Burkina Faso on the Guidelines for the Development of Curricula on Land Governance in Africa. Following the guidelines, UGB introduced a master's degree in Land Governance and Territory Management. Furthermore, the node has built the capacity of parliamentarians on land tenure in West Africa and held a forum on land tenure and youth to bring in more young people into land governance space.

Policy Reform

The node organised national policy dialogues with municipalities in Senegal, National Councils and other governance structures that focused on the revival of land reform in Senegal, the universal land registry project, and the institutionalisation of land management tools which led to the establishment of the land observatory in Senegal's River Valley.



Our Result – Technical Node



Research

PLAAS research is rooted in the politics of land and landlessness. The nodes research emphasises the importance of understanding the value of land holistically, in line with how local communities experience this, to produce sustainable, inclusive land and broader economic reforms. PLAAS is focused primarily on engaged research and routinely convert the findings of scholarly research into accessible formats for uptake by governments, civil society and others.

PLAAS

The Institute for Poverty, Land and Agrarian Studies (PLAAS), University of the Western Cape (UWC)

Capacity Building

PLAAS offers a University of the Western Cape endorsed short course training specifically crafted for land professionals towards building the next generation of African experts in Land Governance. The node has trained 183 land professionals from across the continent, from short courses to doctoral academic programs. This includes the high in-demand short course on Political Economy of Land Governance in Africa for land governance stakeholders addressing gaps in implementing land governance principles across Africa.

Policy Reform

PLAAS's fosters close working relationships between researchers and government officials through NELGA short course on land governance. The training interventions provide a basis for partnerships and relationships for policy engagement, which in turn foster demand from governments for research support.

Priority Areas: 2022 - 2026

KNOWLEDGE PLATFORMS

GENDER RIGHTS

NATIONAL RESEARCH AGENDA

RESEARCH-POLICY LINKAGE

POLICY REFORMS

CAPACITY DEVELOPMENT

Contact: The Network of Excellence for Land Governance in Africa (NELGA)

African Land Policy Center (ALPC)

United Nations Economic Commission for Africa (ECA)

Addis Ababa, Ethiopia

Website: www.nelga.org | Twitter: [NELGA_AU](https://twitter.com/NELGA_AU) | Facebook: [NELGA_Secretariat](https://www.facebook.com/NELGA_Secretariat)